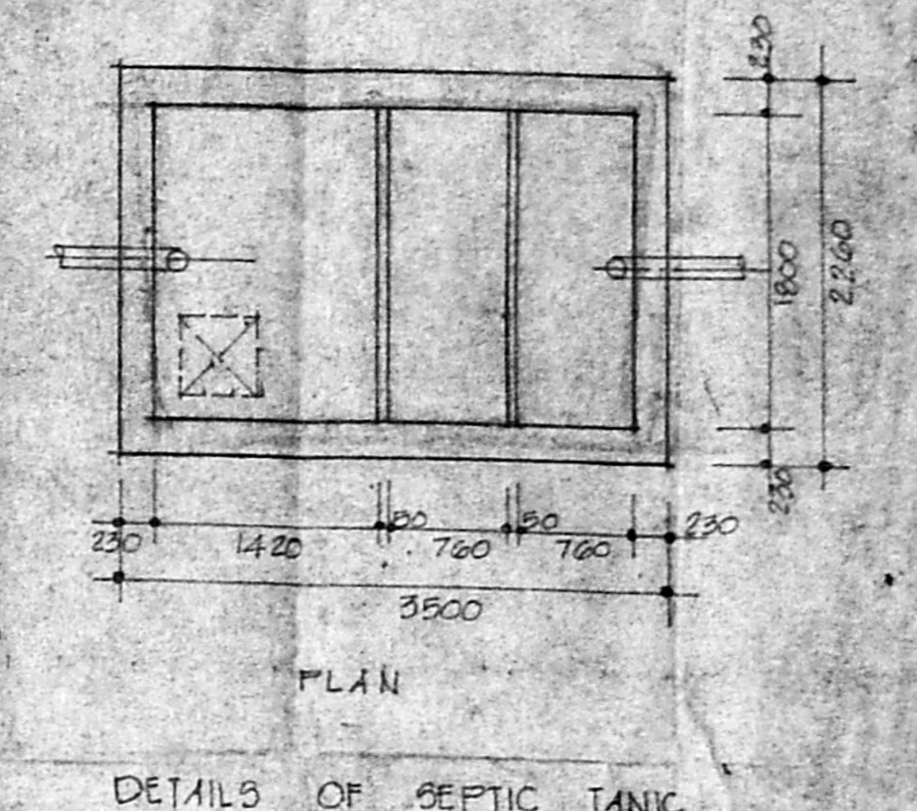
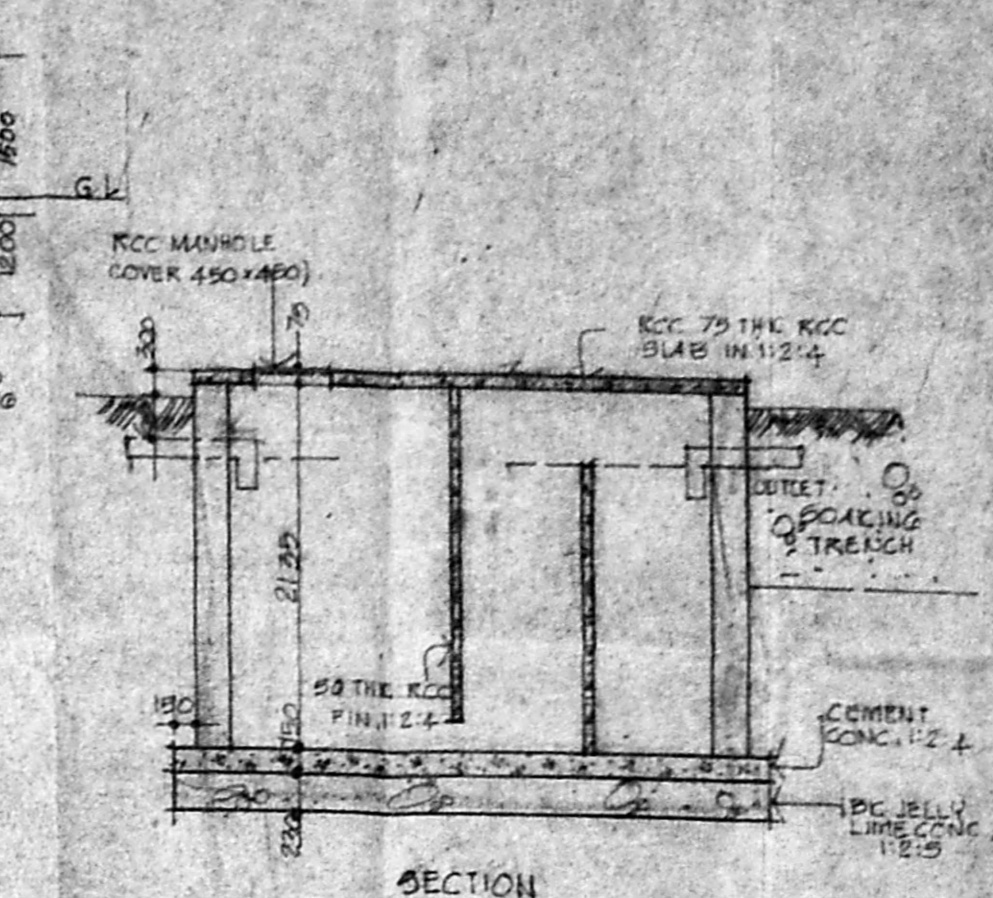
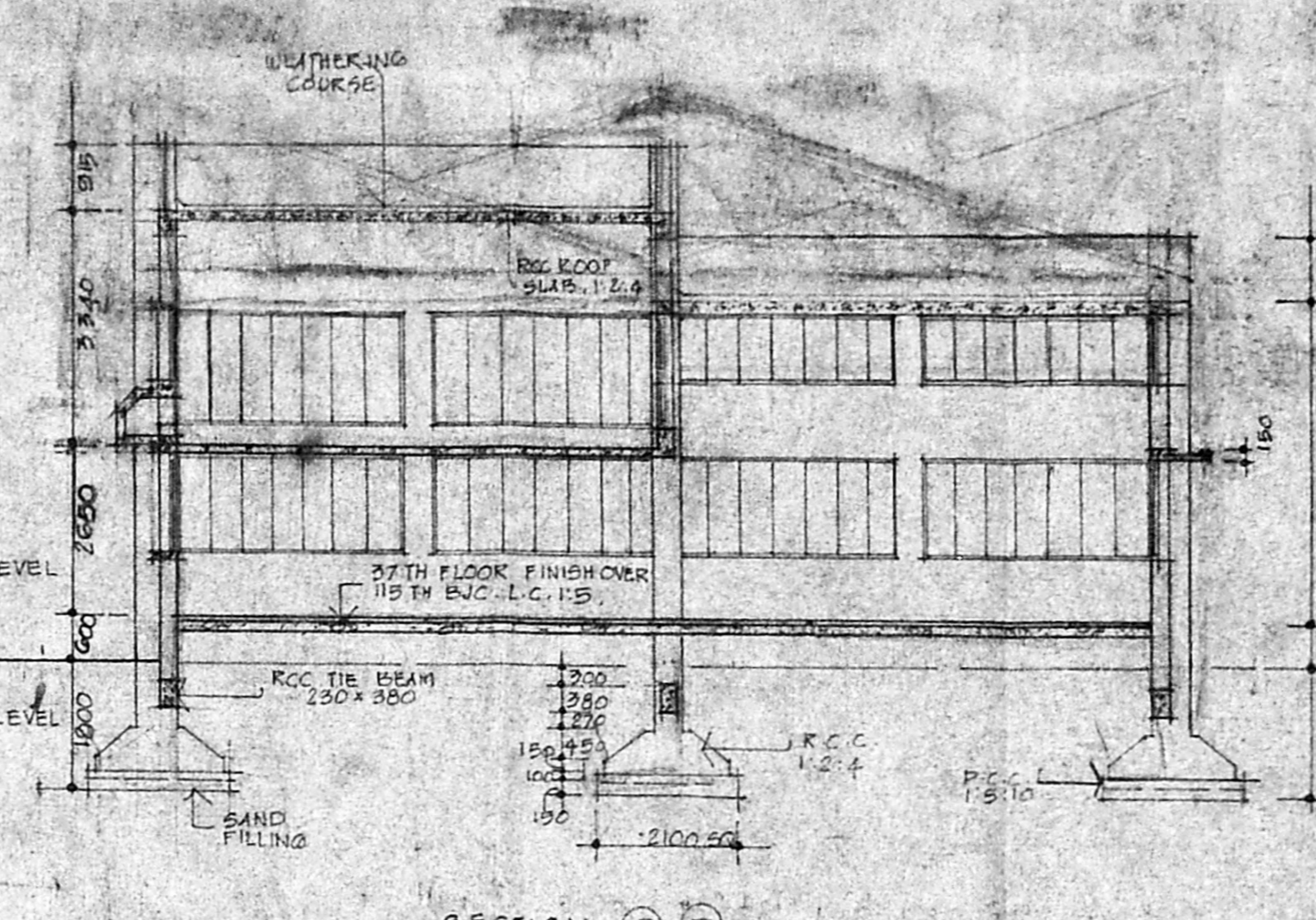
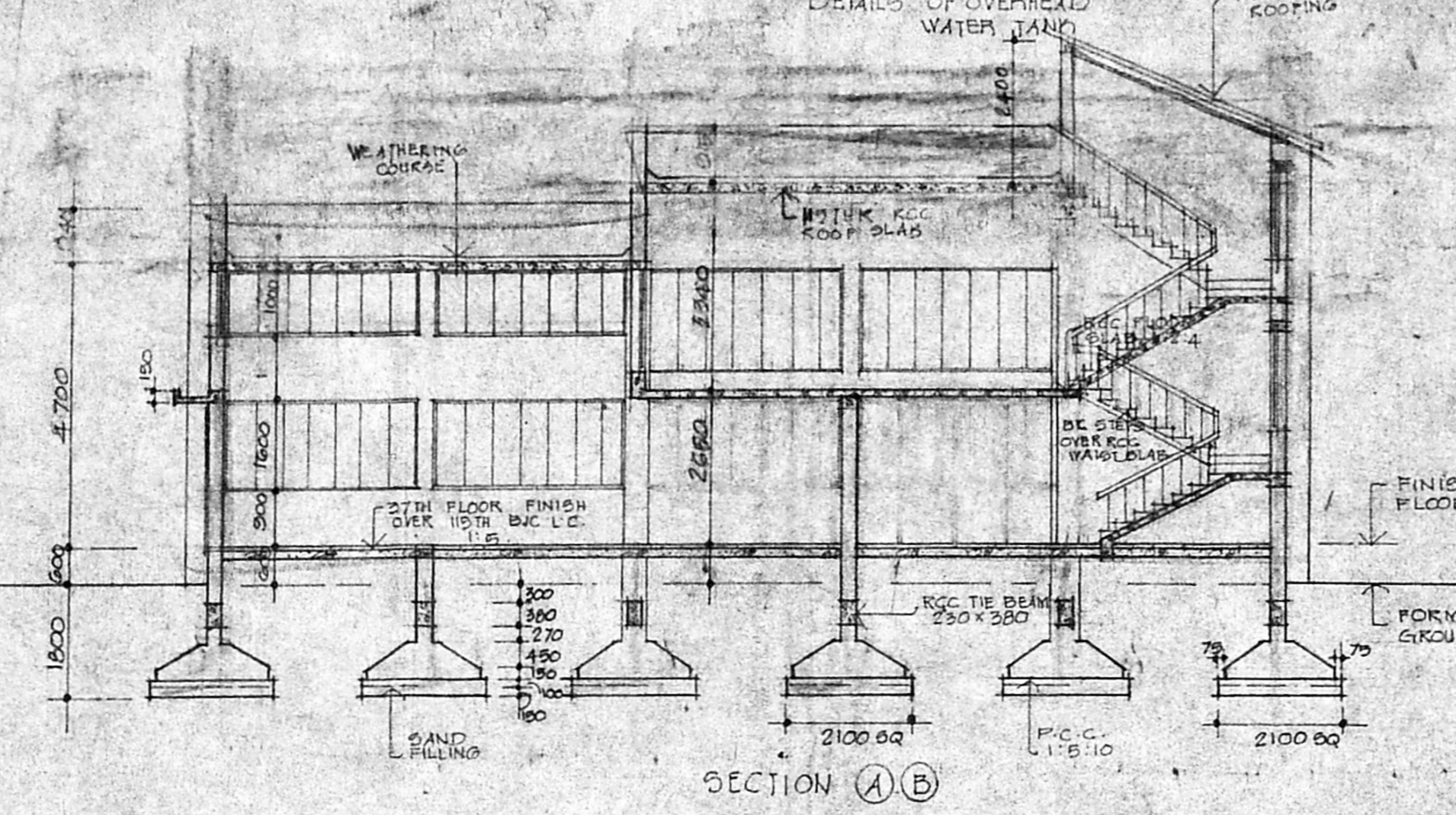
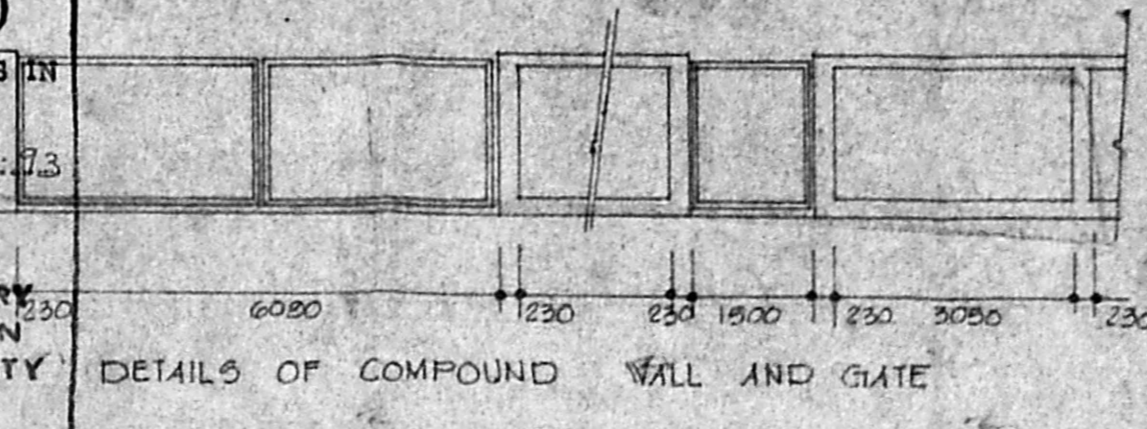


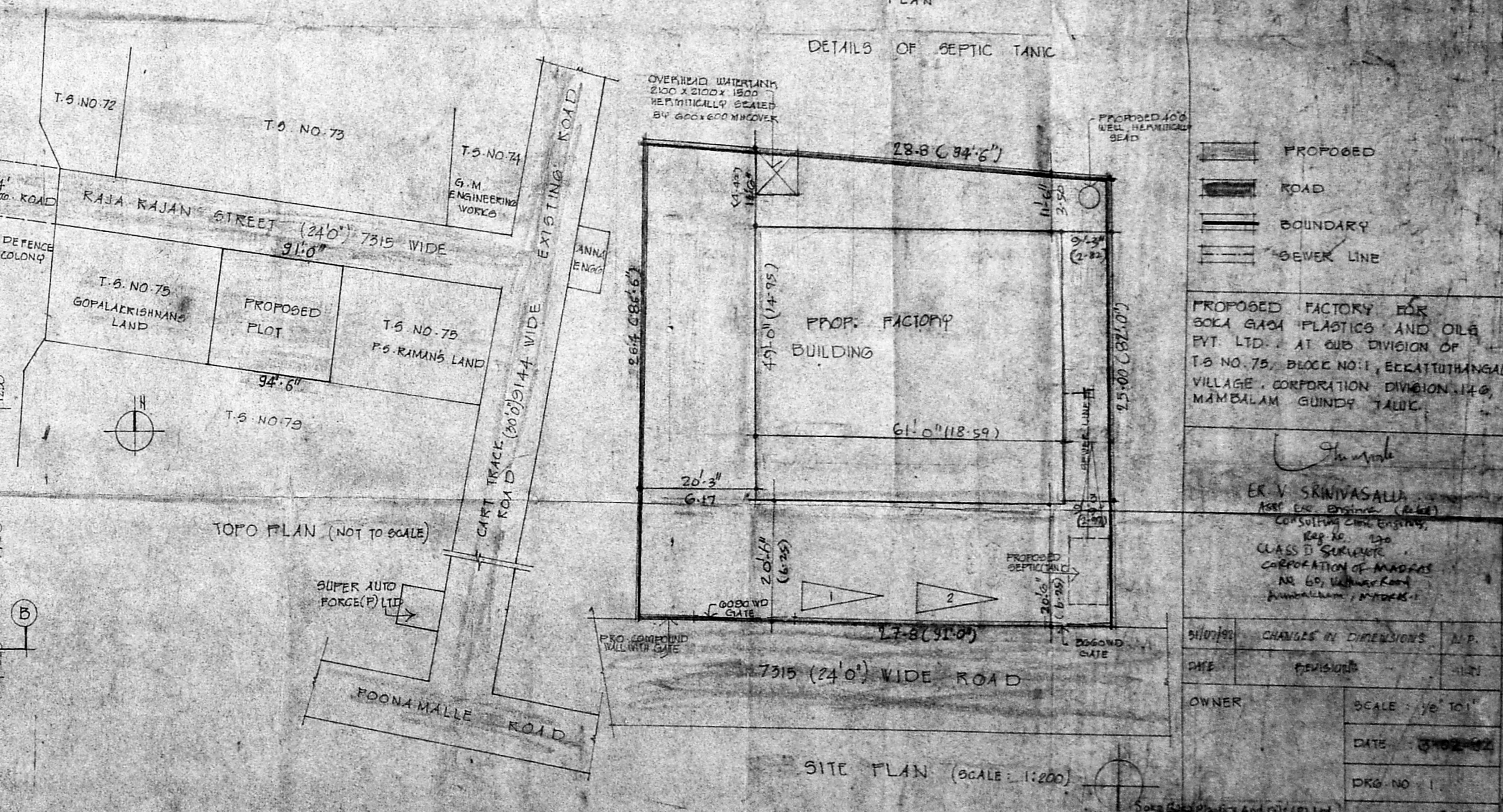
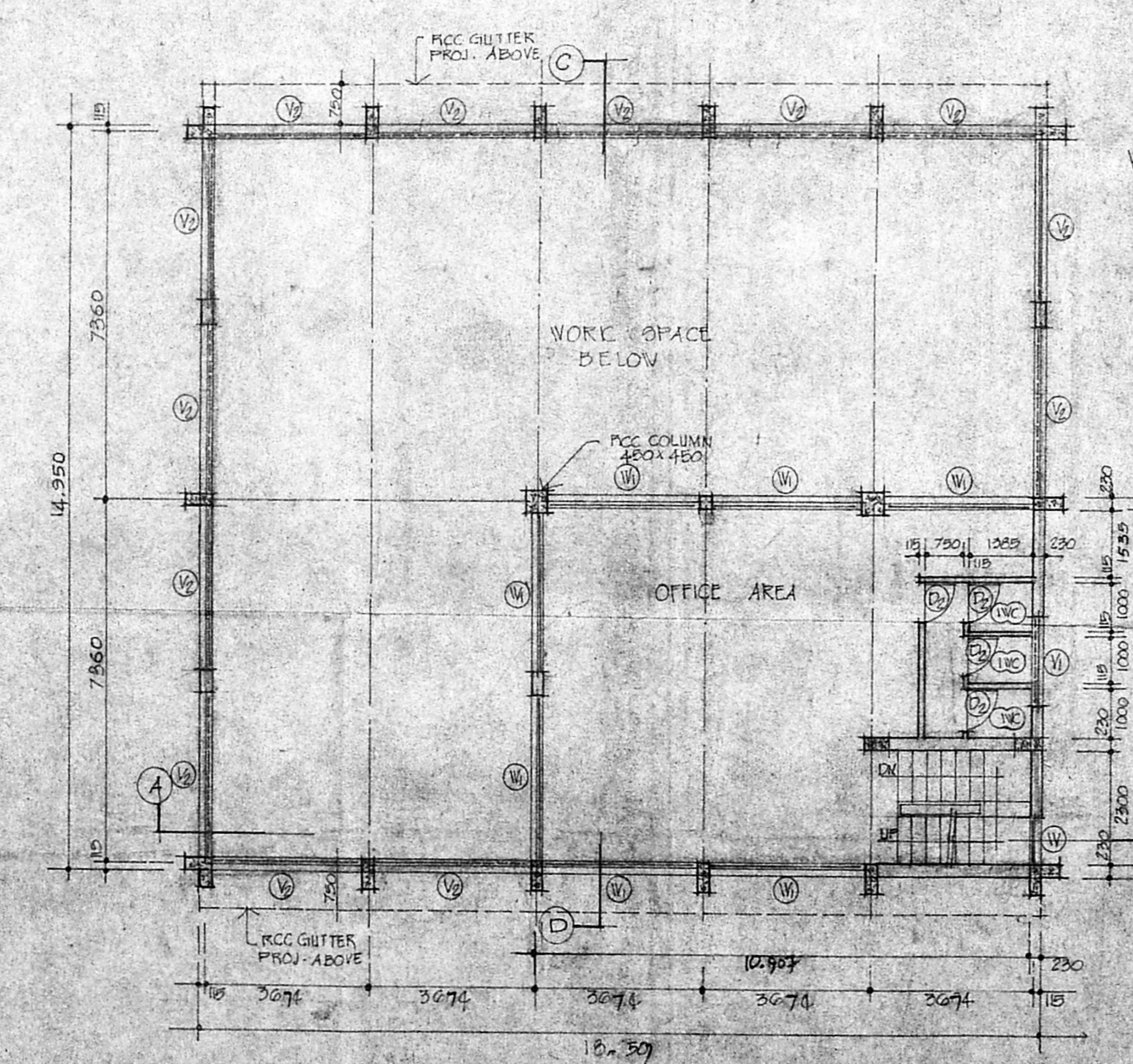
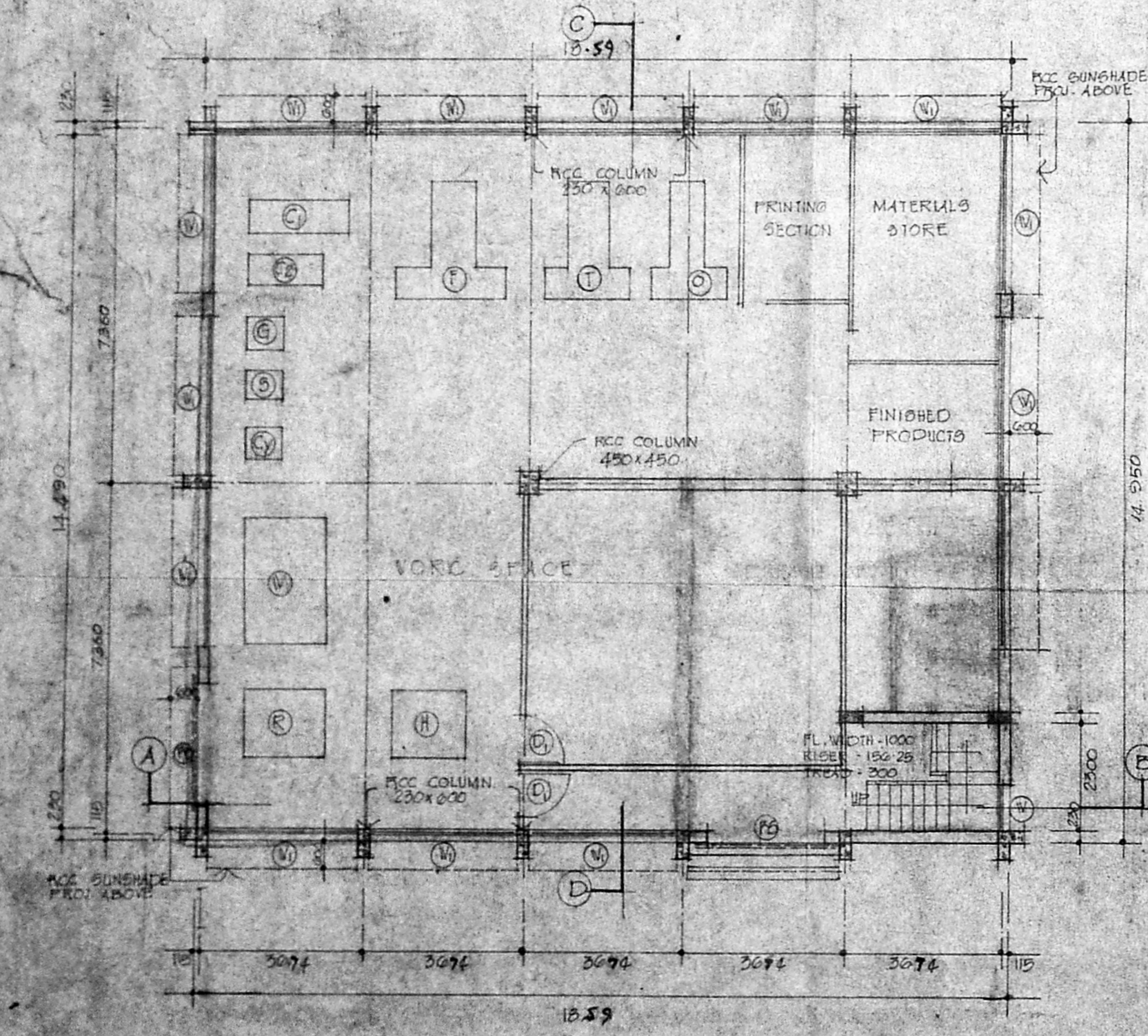
Planning Permit No. C/PP/66/93
APPROVED
SUBJECT TO THE CONDITIONS IN THIS OFFICE LETTER
No. 222156341 dated 12.7.73
FOR THE SECRETARY
MADRAS TROPICAL
DEVELOPMENT AUTHORITY
MADRAS - 600 038



SPECIFICATIONS:
FOUNDATION:
RCC 1:4:8, BC JELL CONG. IN LINE WITH
11/5, R.C.C. 1:2:4 FOR R.F. WITH
WITH RCC FOOTING IN R.F. 1
RCC 1:1/2:3 FOR COLUMN
SUPERSTRUCTURE
RCC 1:1/2:3 FOR COLUMN
RCC 1:1/2:3 FOR COLUMN
RCC BEAMS UNITS 1:1/2:4 MIX
JOINERS
BEST T.V. DOORS
MS STEEL WINDOWS AND VENTILATORS
OUT OF 1/5 SECTIONS
PLASTERING:
WALL - PLASTERING IN C.M. 1:3, 2 THE. 2 THE. 2 THE.
PLASTERING IN C.M. 1:3, 2 THE. 2 THE.
FLOORING:
PLASTERING IN C.M. 1:3, 2 THE. 2 THE. INCLUDING
THREAD LINING
MOSAIC TILES SET IN C.M. 1:3 FOR OPEN
AREA
WEATHERING COURSE
BC JELL IN LINE 1/2 AND TOP LATHING
WITH ONE COURSE OF FAT TILES AND ONE
COURSE OF FREESIDED TILES.
SCHEDULE OF OPENINGS:
A - STEEL DOOR 2200 X 1800
B - T.V. FLUSH DOOR 1000 X 900
C - T.V. PANELLED DOOR 1000 X 900
D - T.V. FLUSH DOOR 1000 X 900
E - STEEL GLAZED WINDOW 1800 X 1400
F - STEEL GLAZED WINDOW 1800 X 1400
G - STEEL GLAZED WINDOW 1800 X 1400
H - STEEL GLAZED WINDOW 1800 X 1400
I - STEEL GLAZED WINDOW 1800 X 1400
J - STEEL GLAZED WINDOW 1800 X 1400
K - STEEL GLAZED WINDOW 1800 X 1400
L - STEEL GLAZED WINDOW 1800 X 1400
M - STEEL GLAZED WINDOW 1800 X 1400
N - STEEL GLAZED WINDOW 1800 X 1400
O - STEEL GLAZED WINDOW 1800 X 1400
P - STEEL GLAZED WINDOW 1800 X 1400
Q - STEEL GLAZED WINDOW 1800 X 1400
R - STEEL GLAZED WINDOW 1800 X 1400
S - STEEL GLAZED WINDOW 1800 X 1400
T - STEEL GLAZED WINDOW 1800 X 1400
U - STEEL GLAZED WINDOW 1800 X 1400
V - STEEL GLAZED WINDOW 1800 X 1400
W - STEEL GLAZED WINDOW 1800 X 1400
X - STEEL GLAZED WINDOW 1800 X 1400
Y - STEEL GLAZED WINDOW 1800 X 1400
Z - STEEL GLAZED WINDOW 1800 X 1400

LIST OF MACHINERY

NO.	NAME OF MACHINERY	LENGTH	WIDTH	H.P.
F	FIVE LITRE CAPACITY	2500	1300	15
D	ONE LITRE CAPACITY	1150	700	5
T	TWO LITRE CAPACITY	1250	140	10
C	COMPRESSOR	1450	700	10
O	COMPRESSOR	1450	700	10
R	KOMEX INJECTION M/C	2380	780	3
V	WINDOR INJECTION M/C	3500	150	10
G	GRANULAR GRINDER	700	380	10
C	CYLNDRICAL GRINDER	700	480	3
B	CIRCULAR SAW	900	570	3
H	HAND INJECTION M/C	2400	1200	3
W	WATER PUMP	600	300	2



PROPOSED
ROAD
BOUNDARY
SEWER LINE

PROPOSED FACTORY FOR
SOCA SODA PLASTICS AND OIL
PVT. LTD. AT SUB DIVISION OF
T.S. NO. 75, BLOCK NO. 1, EKKATTOTHANGAL
VILLAGE, CORPORATION DIVISION 118,
MAMBALAM GUNDRY TALUK.

E. V. SRINIVASULLU
ARCHT. ENG. (REGISTERED)
CONSULTING CIVIL ENGINEER
Rep. No. 130
CLASS B SURVEYOR
CORPORATION OF MADRAS
AR. 60, VEDAVAR ROAD,
MAMBALAM, MADRAS - 1

REVISION	CHANGES IN DIMENSIONS	D.P.
DATE		
DWG. NO.		
JOB NO.	005	
SCALE	1/16 TO 1	
OWNER		